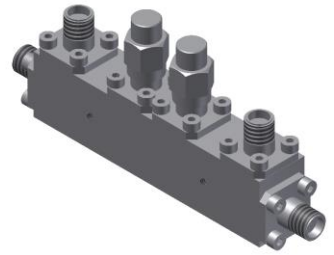


Dual-Directional Coupler

Model D30B180670 Rev.A

18-67GHz 30dB Dual-Directional Coupler, Coaxial connector



Specifications

All specifications are subject to change without notice at any time

Frequency Range	GHz	18-40	40-50	50-67
Main Line VSWR	:1 (Max.)	1.8	1.9	2
Coupling VSWR	:1 (Max.)	1.8	1.9	2
Insertion Loss ¹	dB(Max.)	2.2	2.5	3
Coupling	dB(Max.)	30±1.1	30±1.1	30±1.1
Flatness	dB(Max.)	±1.2	±1.2	±1.2
Directivity	dB(Min.)	10	8	7
Power ²	W(Max.)	CW: 12; Peak: 1000		
Weight	g(Max.)	70	Dimension ³ mm (LxWxH)	63.5x12.7x15.9
Interface	Stainless steel connector; Input: 1.85mm [F], Thru.: 1.85mm [F], Coup.: 1.85mm [F]			
Finishing	Nickel plating			
Temperature	Operating: -55~+85°C; Storage: -55~+100°C			
Environmental	Per MIL-STD-202F, Method 107D, 204D, 213B (optional, contact supplier for detail info.)			
Eng. Customized	N/A			

- Note:
1. Theoretical coupling loss included
 2. VSWR ≤ 1.2 required for CW
 3. Unless otherwise specified, Decimal tolerance: x.±1; .x±0.5; .xx±0.1

Outline Drawing

