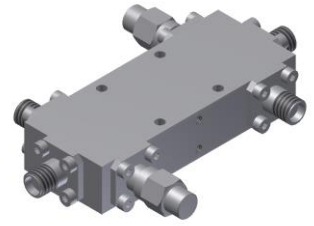


Dual-Directional Coupler

Model D30B020180 Rev.B

2-18GHz 30dB Dual-Directional Coupler, Coaxial connector



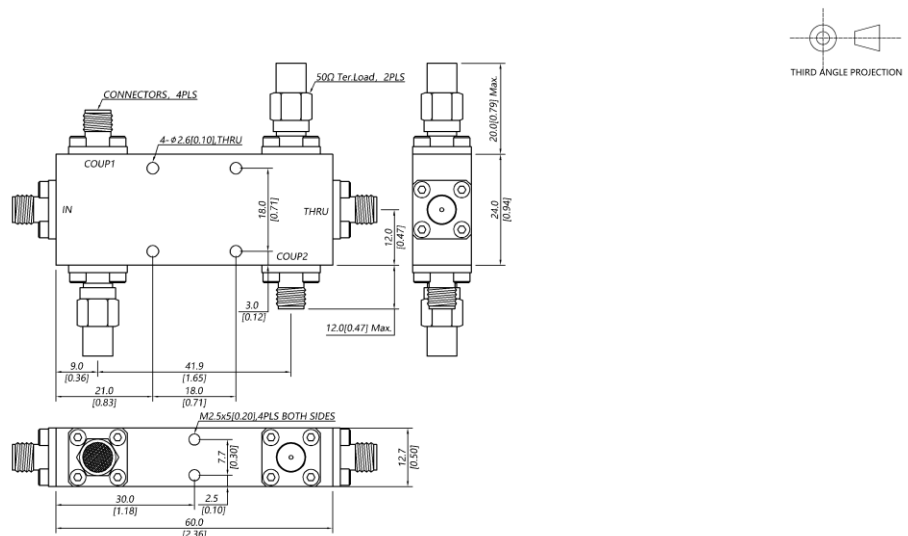
All specifications are subject to change without notice at any time

Specifications

Frequency Range	GHz	2-8	8-18
Main Line VSWR	:1 (Max.)	1.4	1.5
Coupling VSWR	:1 (Max.)	1.4	1.5
Insertion Loss ¹	dB(Max.)	0.5	0.8
Coupling	dB(Max.)	30±0.7	30±0.7
Flatness	dB(Max.)	±0.7	±0.7
Directivity	dB(Min.)	16	14
Power ²	W(Max.)	CW: 30; Peak: 3000	
Weight	g(Max.)	85	Dimension ³ mm (LxWxH) 60.0x12.7x24.0
Interface	Stainless steel connector; Input: SMA [F], Thru.: SMA [F], Coup.: SMA [F]		
Finishing	Nickel plating		
Temperature	Operating: -55~+85°C; Storage: -55~+100°C		
Environmental	Per MIL-STD-202F, Method 107D, 204D, 213B (optional, contact supplier for detail info.)		
Eng. Customized	N/A		

- Note:
1. Theoretical coupling loss included
 2. VSWR ≤ 1.2 required for CW
 3. Unless otherwise specified, Decimal tolerance: x.±1; .x±0.5; .xx±0.1

Outline Drawing



Dual-Directional Coupler

Model D30B020180 Rev.B

2-18GHz 30dB Dual-Directional Coupler, Coaxial connector

Typical Graph

Typical test temperature @25°C

