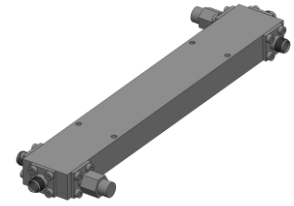


Dual-Directional Coupler

Model D30B003180 Rev.A

0.3-18GHz 30dB Dual-Directional Coupler, Coaxial connector



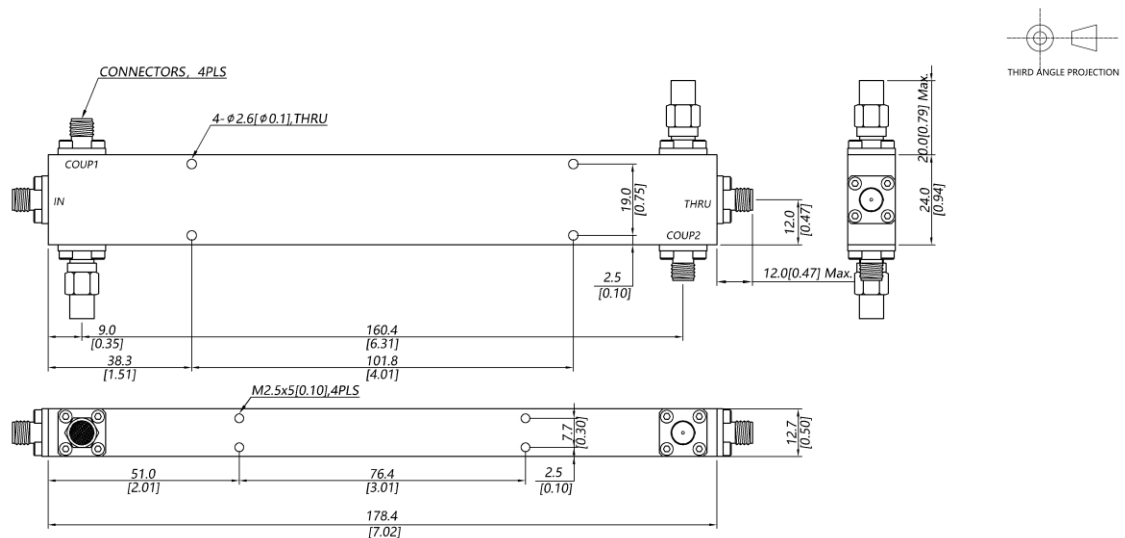
Specifications

All specifications are subject to change without notice at any time

| | | | |
|-----------------------------|-----------------------------------------------------------------------------------------|--------------------|---------------------------------------------------|
| Frequency Range | GHz | 0.3-8 | 8-18 |
| Main Line VSWR | :1 (Max.) | 1.4 | 1.5 |
| Coupling VSWR | :1 (Max.) | 1.4 | 1.5 |
| Insertion Loss ¹ | dB(Max.) | 1.2 | 1.7 |
| Coupling | dB(Max.) | 30±1 | 30±1 |
| Flatness | dB(Max.) | ±1.2 | ±1.2 |
| Directivity | dB(Min.) | 16 | 14 |
| Power ² | W(Max.) | CW: 30; Peak: 3000 | |
| Weight | g(Max.) | 180 | Dimension ³ mm (LxWxH) 178.4x12.7x24.0 |
| Interface | Stainless steel connector; Input: SMA [F], Thru.: SMA [F], Coup.: SMA [F] | | |
| Finishing | Nickel plating | | |
| Temperature | Operating: -55~+85°C; Storage: -55~+100°C | | |
| Environmental | Per MIL-STD-202F, Method 107D, 204D, 213B (optional, contact supplier for detail info.) | | |
| Eng. Customized | N/A | | |

- Note:
1. Theoretical coupling loss included
 2. VSWR ≤ 1.2 required for CW
 3. Unless otherwise specified, Decimal tolerance: x.±1; .x±0.5; .xx±0.1

Outline Drawing



Dual-Directional Coupler

Model D30B003180 Rev.A

0.3-18GHz 30dB Dual-Directional Coupler, Coaxial connector

Typical Graph

Typical test temperature @25°C

