

# High Power Dual-Directional Coupler

## Model D3008HB020060 Rev.A

2-6GHz 30dB 400Watt Dual-Directional Coupler, Coaxial connector



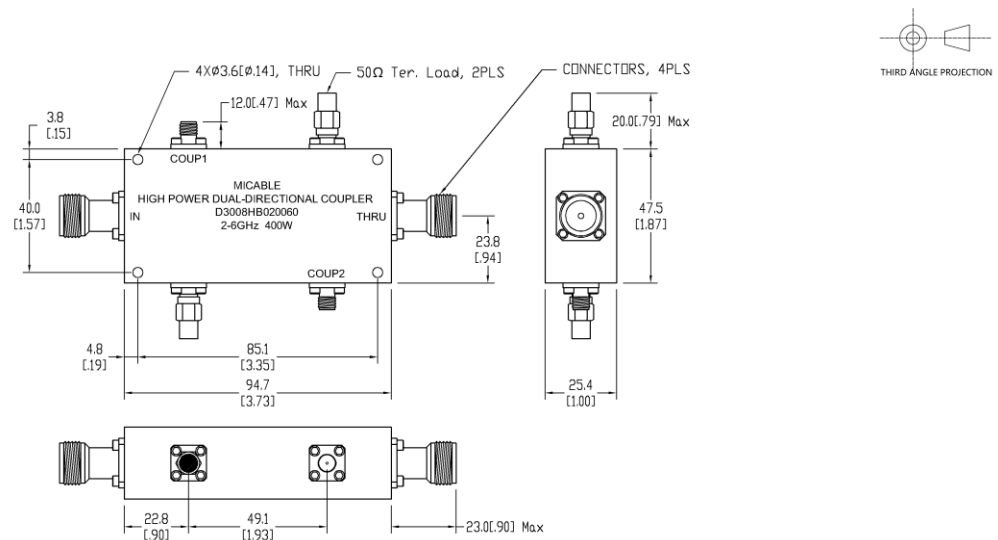
All specifications are subject to change without notice at any time

### Specifications

|                             |   |                     |  |
|-----------------------------|---|---------------------|--|
| Frequency Range             | GHz   | 2-6                 |  |
| Main Line VSWR              | :1 (Max.)   | 1.3                 |  |
| Coupling VSWR               | :1 (Max.)   | 1.3                 |  |
| Insertion Loss <sup>1</sup> | dB(Max.)  | 0.4                 |  |
| Coupling                    | dB(Max.)  | 30±0.7              |  |
| Flatness                    | dB(Max.)  | ±0.9                |  |
| Directivity                 | dB(Min.)  | 15                  |  |
| Power <sup>2</sup>          | W(Max.)   | CW: 400; Peak: 3000 |  |
| Weight                      | g(Max.)   | 365                 | Dimension <sup>3</sup> mm (LxWxH) 94.7x25.4x47.5 |
| Interface                   | Main line: TYPE N [F], Coup.: SMA [F]; Stainless steel connector, Per IEC 61169 |                     |  |
| Finishing                   | Nickel plating, Per QQ-N-290  |                     |  |
| Temperature                 | Operating: -55~+85°C; Storage: -55~+100°C                                       |                     |  |
| Environmental               | Optional: Per MIL-STD-202F (contact supplier for detail info.)                  |                     |  |
| Eng. Customized             | N/A   |                     |  |

- Note:
1. Theoretical coupling loss included
  2. VSWR ≤ 1.2 required for CW
  3. Unless otherwise specified, Decimal tolerance: x.±1; .x±0.5; .xx±0.1

### Outline Drawing



# High Power Dual-Directional Coupler

## Model D3008HB020060 Rev.A

2-6GHz 30dB 400Watt Dual-Directional Coupler, Coaxial connector

### Typical Graph

Typical test environment: 25°C and 60%RH

