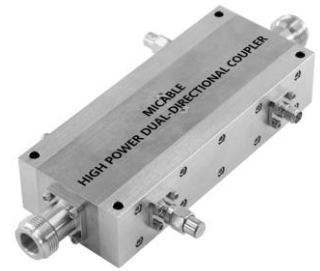


# High Power Dual-Directional Coupler

## Model D3008HB010060 Rev.A

1-6GHz 30dB 400Watt Dual-Directional Coupler, Coaxial connector



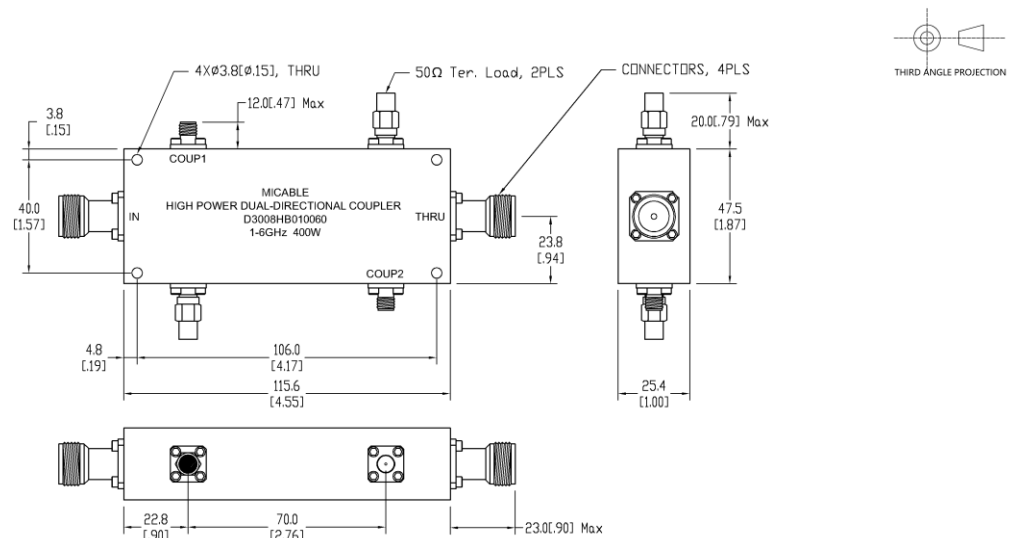
### Specifications

All specifications are subject to change without notice at any time

Frequency Range	GHz	1-6
Main Line VSWR	:1 (Max.)	1.3
Coupling VSWR	:1 (Max.)	1.3
Insertion Loss <sup>1</sup>	dB(Max.)	0.4
Coupling	dB(Max.)	30±0.7
Flatness	dB(Max.)	±1.1
Directivity	dB(Min.)	15
Power <sup>2</sup>	W(Max.)	CW: 400; Peak: 3000
Weight	g(Max.)	440
Dimension <sup>3</sup>	mm (LxWxH)	115.6x25.4x47.5
Interface	Main line: TYPE N [F], Coup.: SMA [F]; Stainless steel connector, Per IEC 61169	
Finishing	Nickel plating, Per QQ-N-290	
Temperature	Operating: -55~+85°C; Storage: -55~+100°C	
Environmental	Optional: Per MIL-STD-202F (contact supplier for detail info.)	
Eng. Customized	N/A	

- Note:
1. Theoretical coupling loss included
  2. VSWR ≤ 1.2 required for CW
  3. Unless otherwise specified, Decimal tolerance: x.±1; .x±0.5; .xx±0.1

### Outline Drawing



# High Power Dual-Directional Coupler

## Model D3008HB010060 Rev.A

1-6GHz 30dB 400Watt Dual-Directional Coupler, Coaxial connector

### Typical Graph

Typical test environment: 25°C and 60%RH

