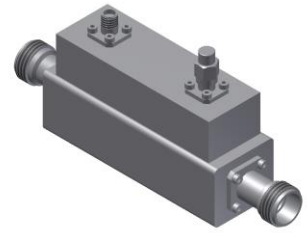


# High Power Directional Coupler

## Model D3008H020180 Rev.A

2-18GHz 30dB 400Watt Directional Coupler



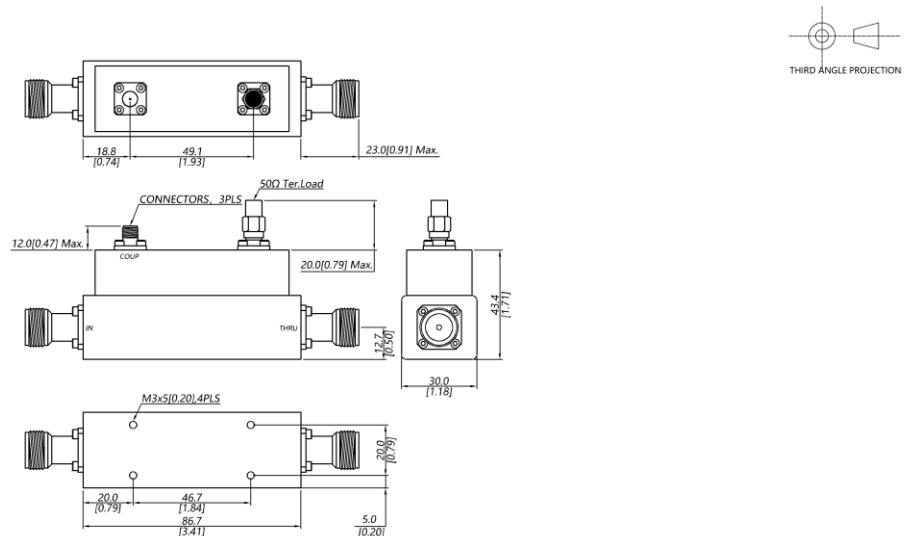
All specifications are subject to change without notice at any time

### Specifications

|                             |                                                                                         |                     |                                                  |
|-----------------------------|-----------------------------------------------------------------------------------------|---------------------|--------------------------------------------------|
| Frequency Range             | GHz                                                                                     | 2-8                 | 8-18                                             |
| Main Line VSWR              | :1 (Max.)                                                                               | 1.4                 | 1.5                                              |
| Coupling VSWR               | :1 (Max.)                                                                               | 1.5                 | 1.6                                              |
| Insertion Loss <sup>1</sup> | dB(Max.)                                                                                | 0.4                 | 0.6                                              |
| Coupling                    | dB(Max.)                                                                                | 30±1                | 30±1                                             |
| Flatness                    | dB(Max.)                                                                                | ±0.8                | ±0.8                                             |
| Directivity                 | dB(Min.)                                                                                | 12                  | 10                                               |
| Power <sup>2</sup>          | W(Max.)                                                                                 | CW: 400; Peak: 3000 |                                                  |
| Weight                      | g(Max.)                                                                                 | 330                 | Dimension <sup>3</sup> mm (LxWxH) 86.7x30.0x43.4 |
| Interface                   | Stainless steel connector; Input: TYPE N [F], Thru.: TYPE N [F], Coup.: SMA [F]         |                     |                                                  |
| Finishing                   | Nickel plating                                                                          |                     |                                                  |
| Temperature                 | Operating: -55~+85°C; Storage: -55~+100°C                                               |                     |                                                  |
| Environmental               | Per MIL-STD-202F, Method 107D, 204D, 213B (optional, contact supplier for detail info.) |                     |                                                  |
| Eng. Customized             | N/A                                                                                     |                     |                                                  |

- Note:
1. Theoretical coupling loss included
  2. VSWR ≤ 1.2 required for CW
  3. Unless otherwise specified, Decimal tolerance: x.±1; .x±0.5; .xx±0.1

### Outline Drawing



# High Power Directional Coupler

## Model D3008H020180 Rev.A

2-18GHz 30dB 400Watt Directional Coupler

### Typical Graph

Typical test temperature @25°C

