

High Power Dual-Directional Coupler

Model D3005HB060180 Rev.A

6-18GHz 30dB 250Watt Dual-Directional Coupler, Coaxial connector



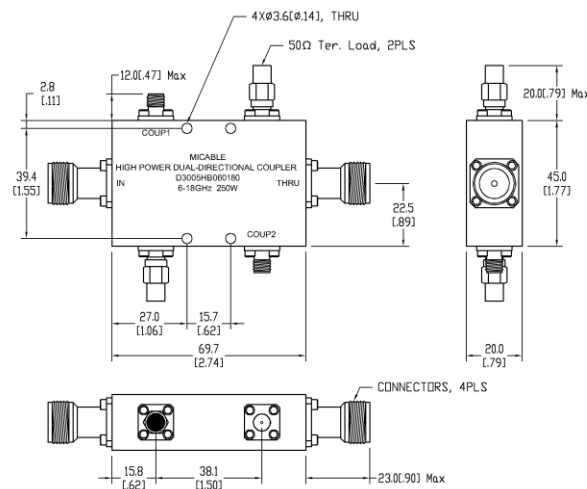
All specifications are subject to change without notice at any time

Specifications

Frequency Range	GHz	6-18
Main Line VSWR	:1 (Max.)	1.5
Coupling VSWR	:1 (Max.)	1.6
Insertion Loss ¹	dB(Max.)	0.5
Coupling	dB(Max.)	30±1
Flatness	dB(Max.)	±0.9
Directivity	dB(Min.)	10
Power ²	W(Max.)	CW: 250; Peak: 3000
Weight	g(Max.)	230
	Dimension ³	mm (LxWxH)
		69.7x20.0x45.0
Interface	Main line: TYPE N [F], Coup.: SMA [F]; Stainless steel connector, Per IEC 61169	
Finishing	Nickel plating, Per QQ-N-290	
Temperature	Operating: -55~+85°C; Storage: -55~+100°C	
Environmental	Optional: Per MIL-STD-202F (contact supplier for detail info.)	
Eng. Customized	N/A	

- Note:
- Theoretical coupling loss included
 - VSWR ≤ 1.2 required for CW
 - Unless otherwise specified, Decimal tolerance: x.±1; .x±0.5; .xx±0.1

Outline Drawing



High Power Dual-Directional Coupler

Model D3005HB060180 Rev.A

6-18GHz 30dB 250Watt Dual-Directional Coupler, Coaxial connector

Typical Graph

Typical test environment: 25°C and 60%RH

