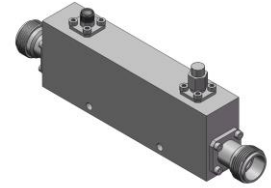


High Power Directional Coupler

Model D3005H010080 Rev.A

1-8GHz 30dB 250Watt Directional Coupler



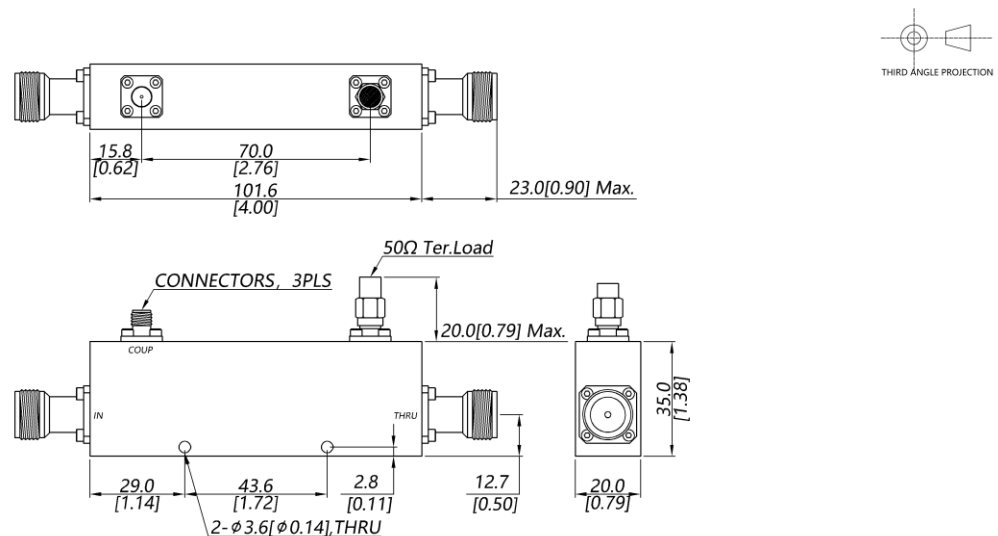
Specifications

All specifications are subject to change without notice at any time

Frequency Range	GHz	1-8
Main Line VSWR	:1 (Max.)	1.4
Coupling VSWR	:1 (Max.)	1.4
Insertion Loss ¹	dB(Max.)	0.4
Coupling	dB(Max.)	30±0.8
Flatness	dB(Max.)	±0.9
Directivity	dB(Min.)	14
Power ²	W(Max.)	CW: 250; Peak: 3000
Weight	g(Max.)	240
Dimension ³	mm (LxWxH)	101.6x20.0x35.0
Interface	Stainless steel connector; Input: TYPE N [F], Thru.: TYPE N [F], Coup.: SMA [F]	
Finishing	Nickel plating	
Temperature	Operating: -55~+85°C; Storage: -55~+100°C	
Environmental	Per MIL-STD-202F, Method 107D, 204D, 213B (optional, contact supplier for detail info.)	
Eng. Customized	N/A	

- Note:
1. Theoretical coupling loss included
 2. VSWR ≤ 1.2 required for CW
 3. Unless otherwise specified, Decimal tolerance: x.±1; .x±0.5; .xx±0.1

Outline Drawing



High Power Directional Coupler

Model D3005H010080 Rev.A

1-8GHz 30dB 250Watt Directional Coupler

Typical Graph

Typical test temperature @25°C

