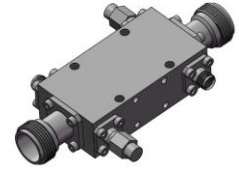


# High Power Dual-Directional Coupler

## Model D3002HB020080 Rev.A

2-8GHz 30dB 120Watt Dual-Directional Coupler



All specifications are subject to change without notice at any time

### Specifications

Frequency Range	GHz	2-8
Main Line VSWR	:1 (Max.)	1.3
Coupling VSWR	:1 (Max.)	1.3
Insertion Loss <sup>1</sup>	dB(Max.)	0.5
Coupling	dB(Max.)	30±0.8
Flatness	dB(Max.)	±0.7
Directivity	dB(Min.)	18
Power <sup>2</sup>	W(Max.)	CW: 120; Peak: 3000
Weight	g(Max.)	TBD
	Dimension <sup>3</sup>	mm (LxWxH)
		57.2x17.5x30.0
Interface	Stainless steel connector; Input: TYPE N [F], Thru.: TYPE N [F], Coup.: SMA [F]	
Finishing	Nickel plating	
Temperature	Operating: -55~+85°C; Storage: -55~+100°C	
Environmental	Per MIL-STD-202F, Method 107D, 204D, 213B (optional, contact supplier for detail info.)	
Eng. Customized	N/A	

- Note:
1. Theoretical coupling loss included
  2. VSWR ≤ 1.2 required for CW
  3. Unless otherwise specified, Decimal tolerance: x.±1; .x±0.5; .xx±0.1

### Outline Drawing

