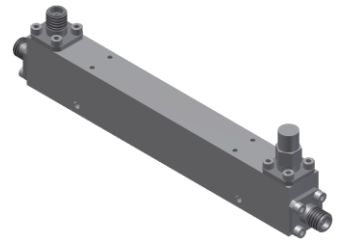


Directional Coupler

Model D20N005400 Rev.B

0.5-40GHz 20dB Directional Coupler, Coaxial connector



Specifications

All specifications are subject to change without notice at any time

Frequency Range	GHz	0.5-8	8-18	18-26.5	26.5-40
Main Line VSWR	:1 (Max.)	1.4	1.5	1.6	1.7
Coupling VSWR	:1 (Max.)	1.4	1.5	1.6	1.7
Insertion Loss ¹	dB(Max.)	1.2	1.6	2	2.6
Coupling	dB(Max.)	20±1	20±1	20±1	20±1
Flatness	dB(Max.)	±1.5	±1.5	±1.5	±1.5
Directivity	dB(Min.)	16	13	11	10
Power ²	W(Max.)	CW: 20; Peak: 3000			
Weight	g(Max.)	90	Dimension ³ mm (LxWxH)	111.8x12.7x17.8	
Interface	Stainless steel connector; Input: 2.92mm [F], Thru.: 2.92mm [F], Coup.: 2.92mm [F]				
Finishing	Nickel plating				
Temperature	Operating: -55~+85°C; Storage: -55~+100°C				
Environmental	Per MIL-STD-202F, Method 107D, 204D, 213B (optional, contact supplier for detail info.)				
Eng. Customized	N/A				

- Note:
1. Theoretical coupling loss included
 2. VSWR ≤ 1.2 required for CW
 3. Unless otherwise specified, Decimal tolerance: x±1; .x±0.5; .xx±0.1

Outline Drawing

