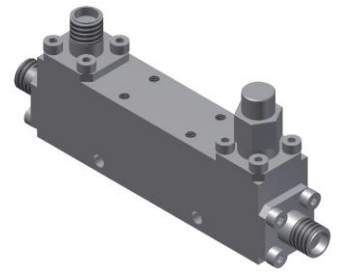


# Directional Coupler

## Model D16N020500 Rev.B

2-50GHz 16dB Directional Coupler, Coaxial connector



### Specifications

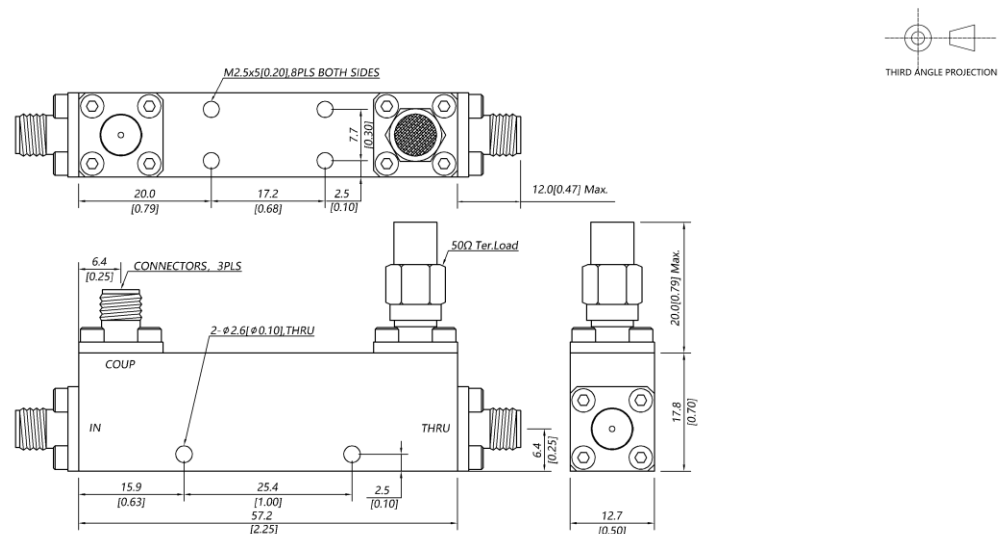
All specifications are subject to change without notice at any time

Frequency Range	GHz	2-18	18-40	40-50
Main Line VSWR	:1 (Max.)	1.6	1.7	1.8
Coupling VSWR	:1 (Max.)	1.6	1.7	1.8
Insertion Loss <sup>1</sup>	dB(Max.)	1.1	1.7	1.9
Coupling	dB(Max.)	16±0.8	16±0.8	16±0.8
Flatness	dB(Max.)	±1	±1	±1
Directivity	dB(Min.)	14	10	8
Power <sup>2</sup>	W(Max.)	CW: 20; Peak: 1000		
Weight	g(Max.)	55	Dimension <sup>3</sup> mm (LxWxH)	57.2x12.7x17.8
Interface	Stainless steel connector; Input: 2.4mm [F], Thru.: 2.4mm [F], Coup.: 2.4mm [F]			
Finishing	Nickel plating			
Temperature	Operating: -55~+85°C; Storage: -55~+100°C			
Environmental	Per MIL-STD-202F, Method 107D, 204D, 213B (optional, contact supplier for detail info.)			
Eng. Customized	N/A			

Note:

1. Theoretical 0.11dB Included
2. VSWR ≤1.2 required for CW
3. Unless otherwise specified, Decimal tolerance: x.±1; .x±0.5; .xx±0.1

### Outline Drawing



# Directional Coupler

## Model D16N020500 Rev.B

2-50GHz 16dB Directional Coupler, Coaxial connector

### Typical Graph

Typical test temperature @25°C

