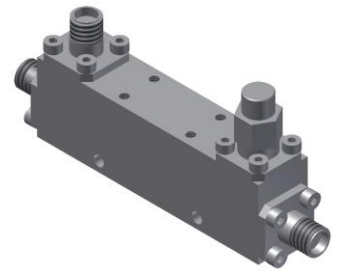


# Directional Coupler

## Model D13N020265 Rev.A

2-26.5GHz 13dB Directional Coupler, Coaxial connector



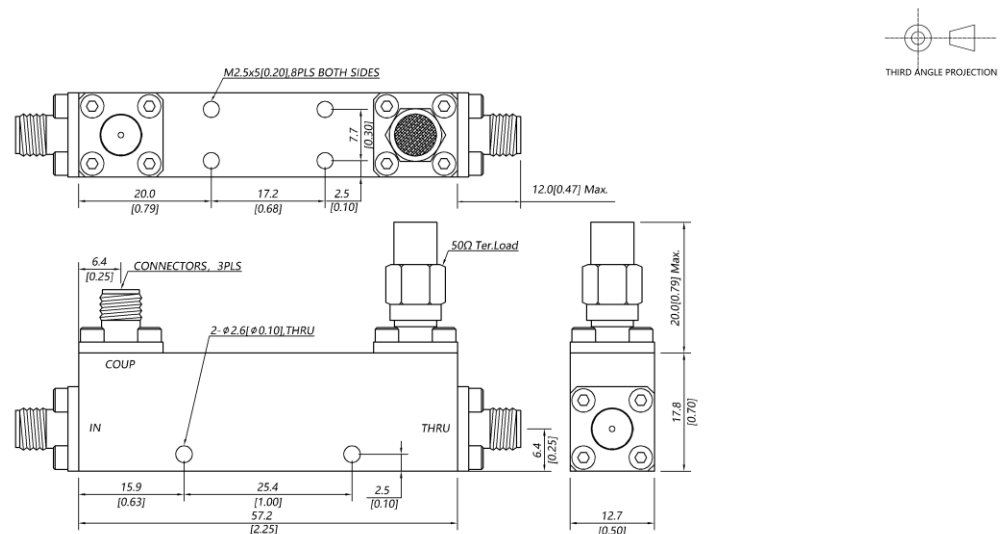
### Specifications

All specifications are subject to change without notice at any time

|                             |   |                    |                                   |                |
|-----------------------------|---|--------------------|-----------------------------------|----------------|
| Frequency Range             | GHz   | 2-8                | 8-18                              | 18-26.5        |
| Main Line VSWR              | :1 (Max.)   | 1.3                | 1.4                               | 1.5            |
| Coupling VSWR               | :1 (Max.)   | 1.3                | 1.4                               | 1.5            |
| Insertion Loss <sup>1</sup> | dB(Max.)  | 1                  | 1.3                               | 1.5            |
| Coupling                    | dB(Max.)  | 13±0.5             | 13±0.5                            | 13±0.5         |
| Flatness                    | dB(Max.)  | ±0.7               | ±0.7                              | ±0.7           |
| Directivity                 | dB(Min.)  | 16                 | 14                                | 13             |
| Power <sup>2</sup>          | W(Max.)   | CW: 30; Peak: 3000 |                                   |                |
| Weight                      | g(Max.)   | 55                 | Dimension <sup>3</sup> mm (LxWxH) | 57.2x12.7x17.8 |
| Interface                   | Stainless steel connector; Input: SMA [F], Thru.: SMA [F], Coup.: SMA [F]               |                    |                                   |                |
| Finishing                   | Nickel plating  |                    |                                   |                |
| Temperature                 | Operating: -55~+85°C; Storage: -55~+100°C   |                    |                                   |                |
| Environmental               | Per MIL-STD-202F, Method 107D, 204D, 213B (optional, contact supplier for detail info.) |                    |                                   |                |
| Eng. Customized             | N/A   |                    |                                   |                |

- Note:
1. Theoretical 0.22dB Included
  2. VSWR ≤ 1.2 required for CW
  3. Unless otherwise specified, Decimal tolerance: x.±1; .x±0.5; .xx±0.1

### Outline Drawing



# Directional Coupler

## Model D13N020265 Rev.A

2-26.5GHz 13dB Directional Coupler, Coaxial connector

### Typical Graph

Typical test temperature @25°C

