

# Directional Coupler

## Model D13N010265 Rev.A

1-26.5GHz 13dB Directional Coupler, Coaxial connector



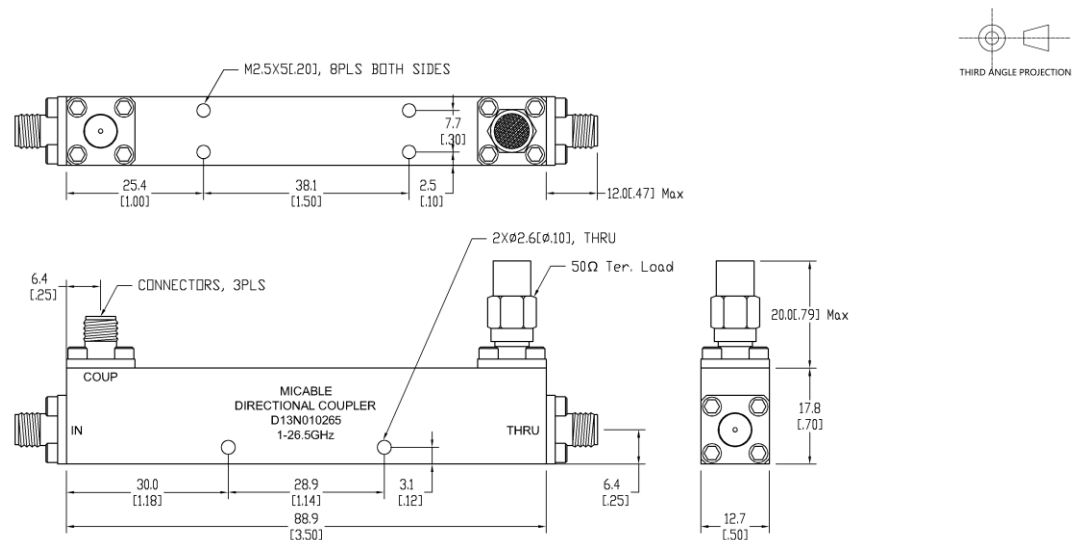
### Specifications

All specifications are subject to change without notice at any time

Frequency Range	GHz	1-8	8-18	18-26.5
Main Line VSWR	:1 (Max.)	1.3	1.4	1.5
Coupling VSWR	:1 (Max.)	1.4	1.5	1.6
Insertion Loss <sup>1</sup>	dB(Max.)	1.3	1.6	2
Coupling	dB(Max.)	13±0.7	13±0.7	13±0.7
Flatness	dB(Max.)	±0.7	±0.7	±0.7
Directivity	dB(Min.)	16	14	13
Power <sup>2</sup>	W(Max.)	CW: 30; Peak: 3000		
Weight	g(Max.)	75	Dimension <sup>3</sup> mm (LxWxH)	88.9x12.7x17.8
Interface	Main line: SMA [F], Coup.: SMA [F]; Stainless steel connector, Per IEC 61169			
Finishing	Nickel plating, Per QQ-N-290			
Temperature	Operating: -55~+85°C; Storage: -55~+100°C			
Environmental	Optional: Per MIL-STD-202F (contact supplier for detail info.)			
Eng. Customized	N/A			

- Note:
1. Theoretical 0.22dB Included
  2. VSWR ≤1.2 required for CW
  3. Unless otherwise specified, Decimal tolerance: x.±1; .x±0.5; .xx±0.1

### Outline Drawing



# Directional Coupler

## Model D13N010265 Rev.A

1-26.5GHz 13dB Directional Coupler, Coaxial connector

### Typical Graph

@ Ambient Temperature

