

Directional Coupler

Model D13N010180 Rev.A

1-18GHz 13dB Directional Coupler, Coaxial connector



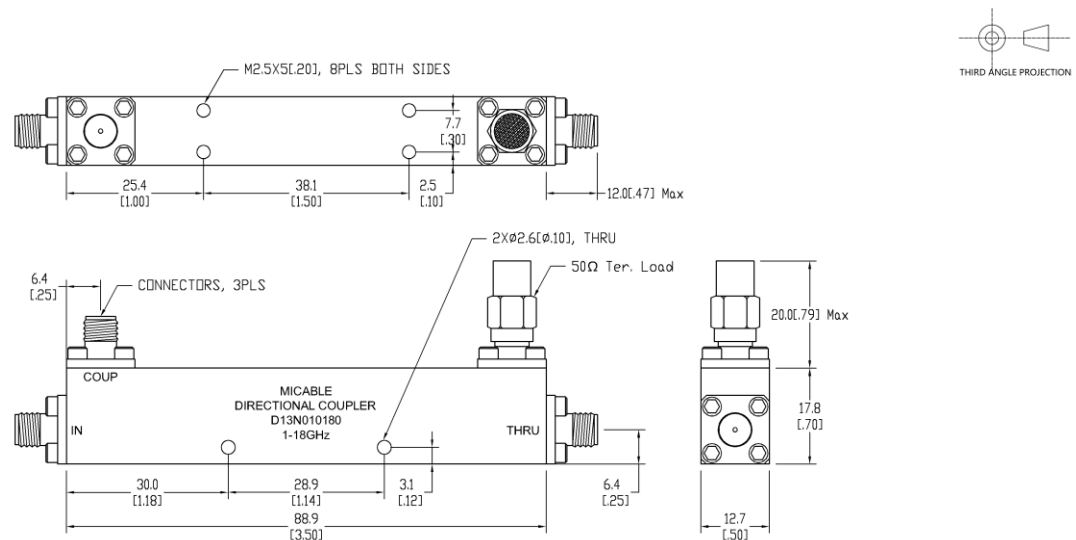
Specifications

All specifications are subject to change without notice at any time

| | | | |
|-----------------------------|--|--------------------|--|
| Frequency Range | GHz | 1-8 | 8-18 |
| Main Line VSWR | :1 (Max.) | 1.3 | 1.4 |
| Coupling VSWR | :1 (Max.) | 1.4 | 1.5 |
| Insertion Loss ¹ | dB(Max.) | 1.3 | 1.6 |
| Coupling | dB(Max.) | 13±0.5 | 13±0.5 |
| Flatness | dB(Max.) | ±0.6 | ±0.6 |
| Directivity | dB(Min.) | 16 | 14 |
| Power ² | W(Max.) | CW: 30; Peak: 3000 | |
| Weight | g(Max.) | 75 | Dimension ³ mm (LxWxH) 88.9x12.7x17.8 |
| Interface | Main line: SMA [F], Coup.: SMA [F]; Stainless steel connector, Per IEC 61169 | | |
| Finishing | Nickel plating, Per QQ-N-290 | | |
| Temperature | Operating: -55~+85°C; Storage: -55~+100°C | | |
| Environmental | Optional: Per MIL-STD-202F (contact supplier for detail info.) | | |
| Eng. Customized | N/A | | |

- Note:
1. Theoretical 0.22dB Included
 2. VSWR ≤1.2 required for CW
 3. Unless otherwise specified, Decimal tolerance: x.±1; .x±0.5; .xx±0.1

Outline Drawing



Directional Coupler

Model D13N010180 Rev.A

1-18GHz 13dB Directional Coupler, Coaxial connector

Typical Graph

@Ambient Temperature

