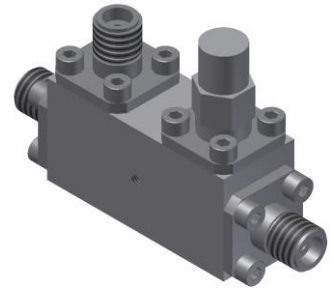


# Directional Coupler

## Model D10N265670 Rev.A

26.5-67GHz 10dB Directional Coupler, Coaxial connector



### Specifications

All specifications are subject to change without notice at any time

Frequency Range	GHz	26.5-40	40-50	50-67
Main Line VSWR	:1 (Max.)	1.7	1.8	1.9
Coupling VSWR	:1 (Max.)	1.7	1.8	1.9
Insertion Loss <sup>1</sup>	dB(Max.)	1.7	2	2.5
Coupling	dB(Max.)	10±1	10±1	10±1
Flatness	dB(Max.)	±1	±1	±1
Directivity	dB(Min.)	10	8	7
Power <sup>2</sup>	W(Max.)	CW: 12; Peak: 1000		
Weight	g(Max.)	40	Dimension <sup>3</sup> mm (LxWxH)	31.8x12.7x15.9
Interface	Stainless steel connector; Input: 1.85mm [F], Thru.: 1.85mm [F], Coup.: 1.85mm [F]			
Finishing	Nickel plating			
Temperature	Operating: -55~+85°C; Storage: -55~+100°C			
Environmental	Per MIL-STD-202F, Method 107D, 204D, 213B (optional, contact supplier for detail info.)			
Eng. Customized	N/A			

- Note:
1. Theoretical 0.46dB Included
  2. VSWR ≤1.2 required for CW
  3. Unless otherwise specified, Decimal tolerance: x.±1; .x±0.5; .xx±0.1

### Outline Drawing



# Directional Coupler

## Model D10N265670 Rev.A

26.5-67GHz 10dB Directional Coupler, Coaxial connector

### Typical Graph

Typical test temperature @25°C

