

# Directional Coupler

## Model D10N010265 Rev.B

1-26.5GHz 10dB Directional Coupler, Coaxial connector



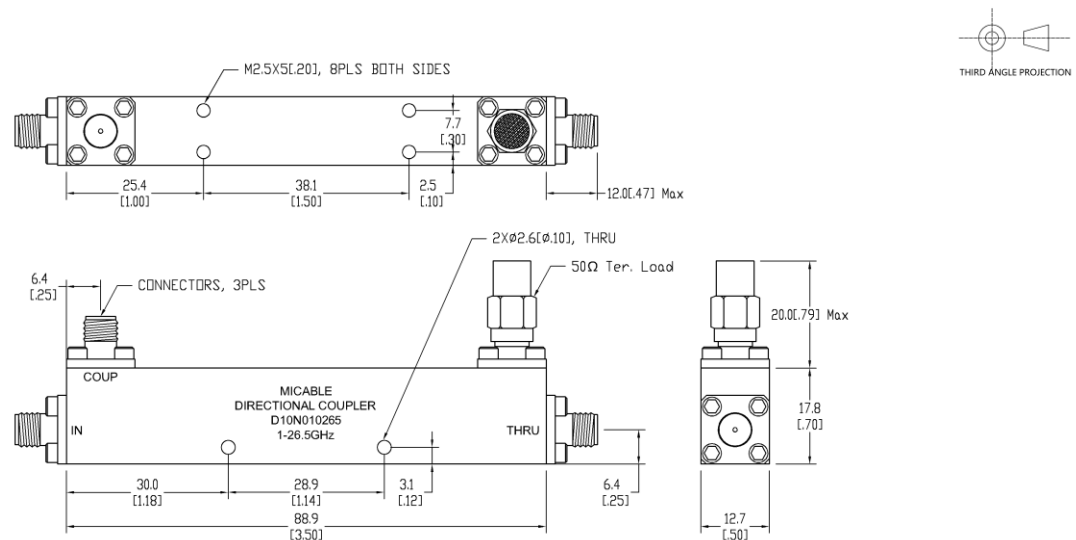
### Specifications

All specifications are subject to change without notice at any time

Frequency Range	GHz	1-8	8-18	18-26.5
Main Line VSWR	:1 (Max.)	1.4	1.5	1.6
Coupling VSWR	:1 (Max.)	1.4	1.5	1.6
Insertion Loss <sup>1</sup>	dB(Max.)	1.2	1.5	1.8
Coupling	dB(Max.)	10±0.5	10±0.5	10±0.5
Flatness	dB(Max.)	±0.8	±0.8	±0.8
Directivity	dB(Min.)	16	14	13
Power <sup>2</sup>	W(Max.)	CW: 30; Peak: 3000		
Weight	g(Max.)	75	Dimension <sup>3</sup> mm (LxWxH)	88.9x12.7x17.8
Interface	Main line: SMA [F], Coup.: SMA [F]; Stainless steel connector, Per IEC 61169			
Finishing	Nickel plating, Per QQ-N-290			
Temperature	Operating: -55~+85°C; Storage: -55~+100°C			
Environmental	Optional: Per MIL-STD-202F (contact supplier for detail info.)			
Eng. Customized	N/A			

- Note:
- Theoretical 0.46dB Included
  - VSWR ≤ 1.2 required for CW
  - Unless otherwise specified, Decimal tolerance: x.±1; .x±0.5; .xx±0.1

### Outline Drawing



# Directional Coupler

## Model D10N010265 Rev.B

1-26.5GHz 10dB Directional Coupler, Coaxial connector

### Typical Graph

@ Ambient Temperature

