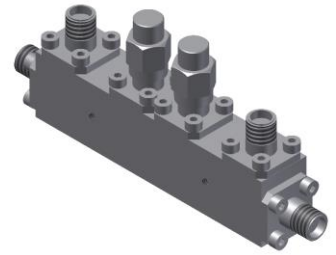


# Dual-Directional Coupler

## Model D10B060265 Rev.A

6-26.5GHz 10dB Dual-Directional Coupler, Coaxial connector



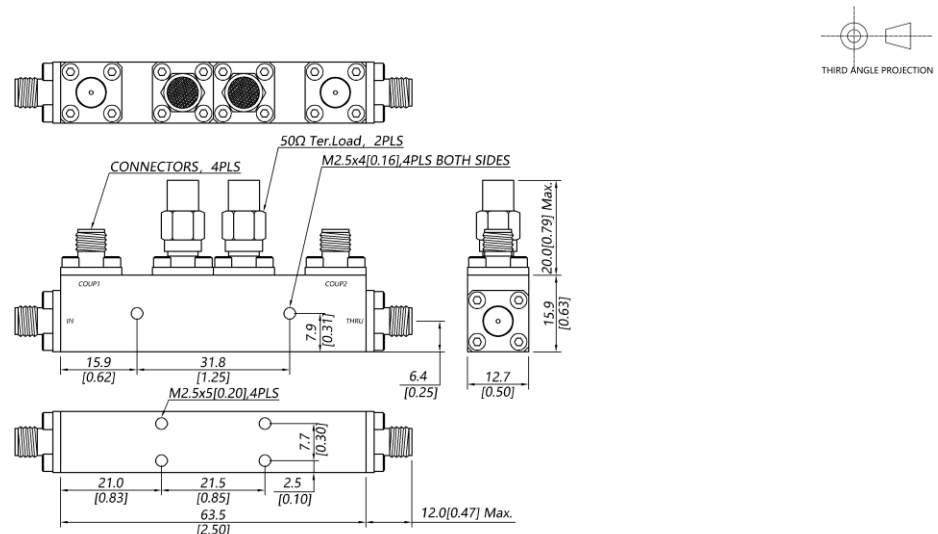
### Specifications

All specifications are subject to change without notice at any time

Frequency Range	GHz	6-18	18-26.5
Main Line VSWR	:1 (Max.)	1.5	1.6
Coupling VSWR	:1 (Max.)	1.5	1.6
Insertion Loss <sup>1</sup>	dB(Max.)	2	2.4
Coupling	dB(Max.)	10±0.7	10±0.8
Flatness	dB(Max.)	±0.8	0.8
Directivity	dB(Min.)	15	14
Power <sup>2</sup>	W(Max.)	CW: 30; Peak: 3000	
Weight	g(Max.)	70	Dimension <sup>3</sup> mm (LxWxH) 63.5x12.7x15.9
Interface	Stainless steel connector; Input: SMA [F], Thru.: SMA [F], Coup.: SMA [F]		
Finishing	Nickel plating		
Temperature	Operating: -55~+85°C; Storage: -55~+100°C		
Environmental	Per MIL-STD-202F, Method 107D, 204D, 213B (optional, contact supplier for detail info.)		
Eng. Customized	N/A		

- Note:
- Theoretical 0.92dB Included
  - VSWR ≤1.2 required for CW
  - Unless otherwise specified, Decimal tolerance: x.±1; .x±0.5; .xx±0.1

### Outline Drawing



# Dual-Directional Coupler

## Model D10B060265 Rev.A

6-26.5GHz 10dB Dual-Directional Coupler, Coaxial connector

### Typical Graph

Typical test temperature @25°C

