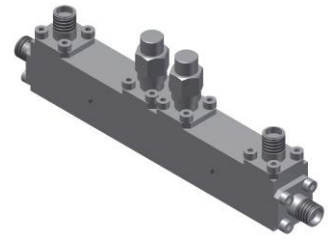


# Dual-Directional Coupler

## Model D10B020265 Rev.A

2-26.5GHz 10dB Dual-Directional Coupler, Coaxial connector



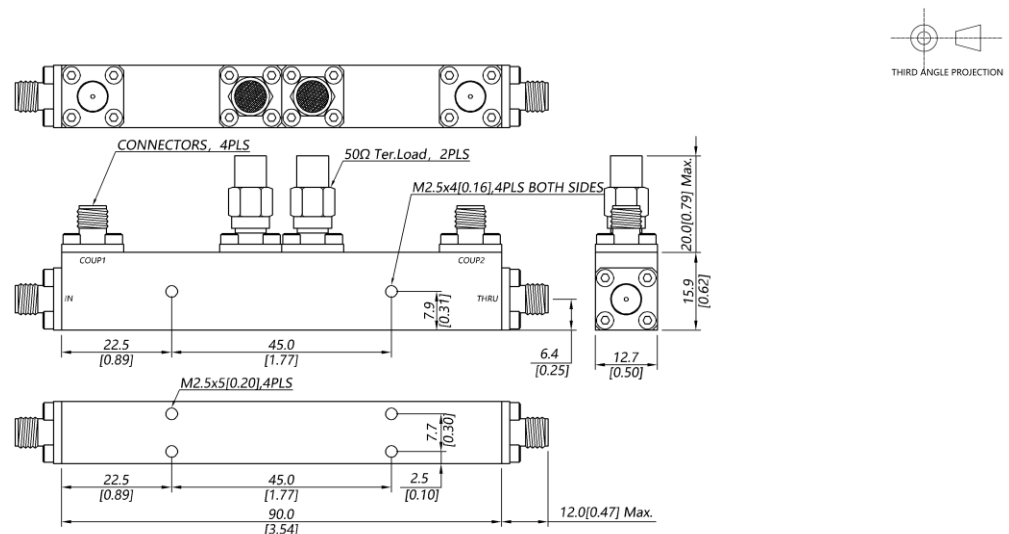
### Specifications

All specifications are subject to change without notice at any time

Frequency Range	GHz	2-8	8-18	18-26.5
Main Line VSWR	:1 (Max.)	1.4	1.5	1.6
Coupling VSWR	:1 (Max.)	1.4	1.5	1.6
Insertion Loss <sup>1</sup>	dB(Max.)	1.9	2.4	2.8
Coupling	dB(Max.)	10±0.8	10±0.8	10±0.8
Flatness	dB(Max.)	±0.8	±0.8	±0.8
Directivity	dB(Min.)	17	15	14
Power <sup>2</sup>	W(Max.)	CW: 30; Peak: 3000		
Weight	g(Max.)	85	Dimension <sup>3</sup> mm (LxWxH)	90.0x12.7x15.9
Interface	Stainless steel connector; Input: SMA [F], Thru.: SMA [F], Coup.: SMA [F]			
Finishing	Nickel plating			
Temperature	Operating: -55~+85°C; Storage: -55~+100°C			
Environmental	Per MIL-STD-202F, Method 107D, 204D, 213B (optional, contact supplier for detail info.)			
Eng. Customized	N/A			

- Note:
1. Theoretical 0.92dB Included
  2. VSWR ≤1.2 required for CW
  3. Unless otherwise specified, Decimal tolerance: x.±1; .x±0.5; .xx±0.1

### Outline Drawing



# Dual-Directional Coupler

## Model D10B020265 Rev.A

2-26.5GHz 10dB Dual-Directional Coupler, Coaxial connector

### Typical Graph

Typical test temperature @25°C

