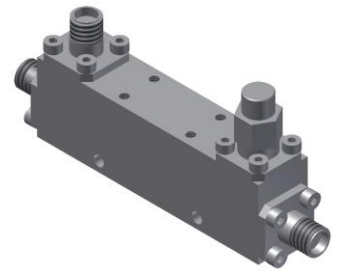


# Directional Coupler

## Model D06N020180 Rev.A

2-18GHz 6dB Directional Coupler, Coaxial connector



All specifications are subject to change without notice at any time

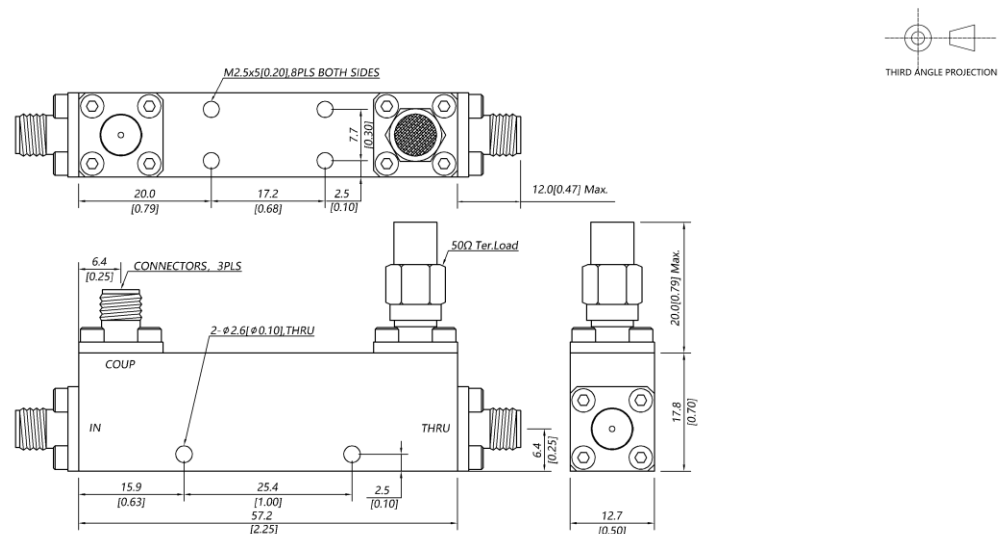
### Specifications

Frequency Range	GHz	2-8	8-18
Main Line VSWR	:1 (Max.)	1.5	1.6
Coupling VSWR	:1 (Max.)	1.5	1.6
Insertion Loss <sup>1</sup>	dB(Max.)	2	2.3
Coupling	dB(Max.)	6±0.6	6±0.6
Flatness	dB(Max.)	±0.6	±0.6
Directivity	dB(Min.)	17	15
Power <sup>2</sup>	W(Max.)	CW: 30; Peak: 3000	
Weight	g(Max.)	55	Dimension <sup>3</sup> mm (LxWxH) 57.2x12.7x17.8
Interface	Stainless steel connector; Input: SMA [F], Thru.: SMA [F], Coup.: SMA [F]		
Finishing	Nickel plating		
Temperature	Operating: -55~+85°C; Storage: -55~+100°C		
Environmental	Per MIL-STD-202F, Method 107D, 204D, 213B (optional, contact supplier for detail info.)		
Eng. Customized	N/A		

Note:

1. Theoretical 1.25dB Included
2. VSWR ≤1.2 required for CW
3. Unless otherwise specified, Decimal tolerance: x.±1; .x±0.5; .xx±0.1

### Outline Drawing



# Directional Coupler

## Model D06N020180 Rev.A

2-18GHz 6dB Directional Coupler, Coaxial connector

### Typical Graph

Typical test temperature @25°C

